



**Menlo Park City School District**  
Director of Facilities Reports

Board of Education Meeting

January 15, 2013

# Meeting Outline

---

- ▶ **Background**
  - ▶ District / Schools / Boundaries
- ▶ **Problems Statement**
  - ▶ District Flexibility Goals
- ▶ **Road Map – Process and Timeline**
  - ▶ Community Meetings
  - ▶ School District Board Decision
- ▶ **Guiding Principles**
- ▶ **Review Potential Options**
- ▶ **Workshop Session**
  - ▶ Developing New Option
  - ▶ Evaluating Options



# Background Information

School	2007 Master Plan			2009 Master Plan Revisions		Enrollment
	Targeted Peak Enrollment	Number of Standard Classrooms	Student Capacity	Number of Standard Classrooms	Student Capacity	2012-13
Encinal	680-700	32 + SDC	704	34 + SDC	763	755
Laurel	380-395	20	400	23	484	489
Oak Knoll	680-700	34	720	34 +SDC	763	742
Hillview	920-960	TBD	960	48	950-1050	812
TOTALS	2660 - 2755	-	2784	-	2997	2798

## Encinal School K-5

- Approx. 10 Acres
- Includes District Office and TERC
- Laurel K-3 Feeds into Encinal

## Laurel School K-3

- Approx. 6.5 Acres
- No Gym Facility

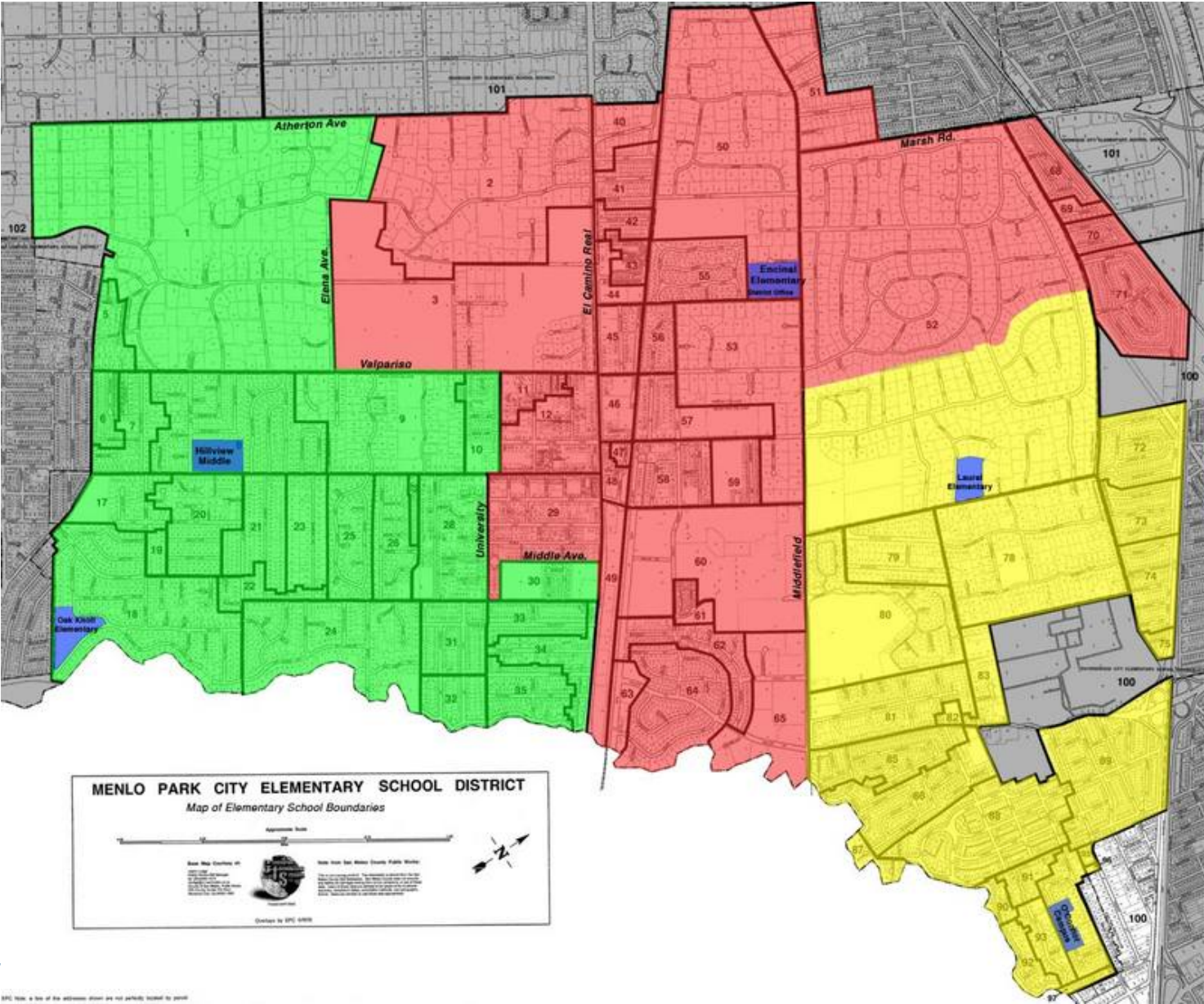
## Hillview School 6-8 – New School

- ▶ Approx. 9.4 Acres

## Oak Knoll School K-5

- Approx. 8.1 Acres
- At capacity with no additional space to expand O’Conner Site (Leased to GAIS)
- Approx. 6.1 Acres
- Single building of 10 classroom and office space.
- No major modernization work since 1950’s
- Early notification to terminate: April 10
- Earliest use of facility July 2014

# Current District Boundaries



SPC uses a lot of the address data we do not publicly publish to parcel

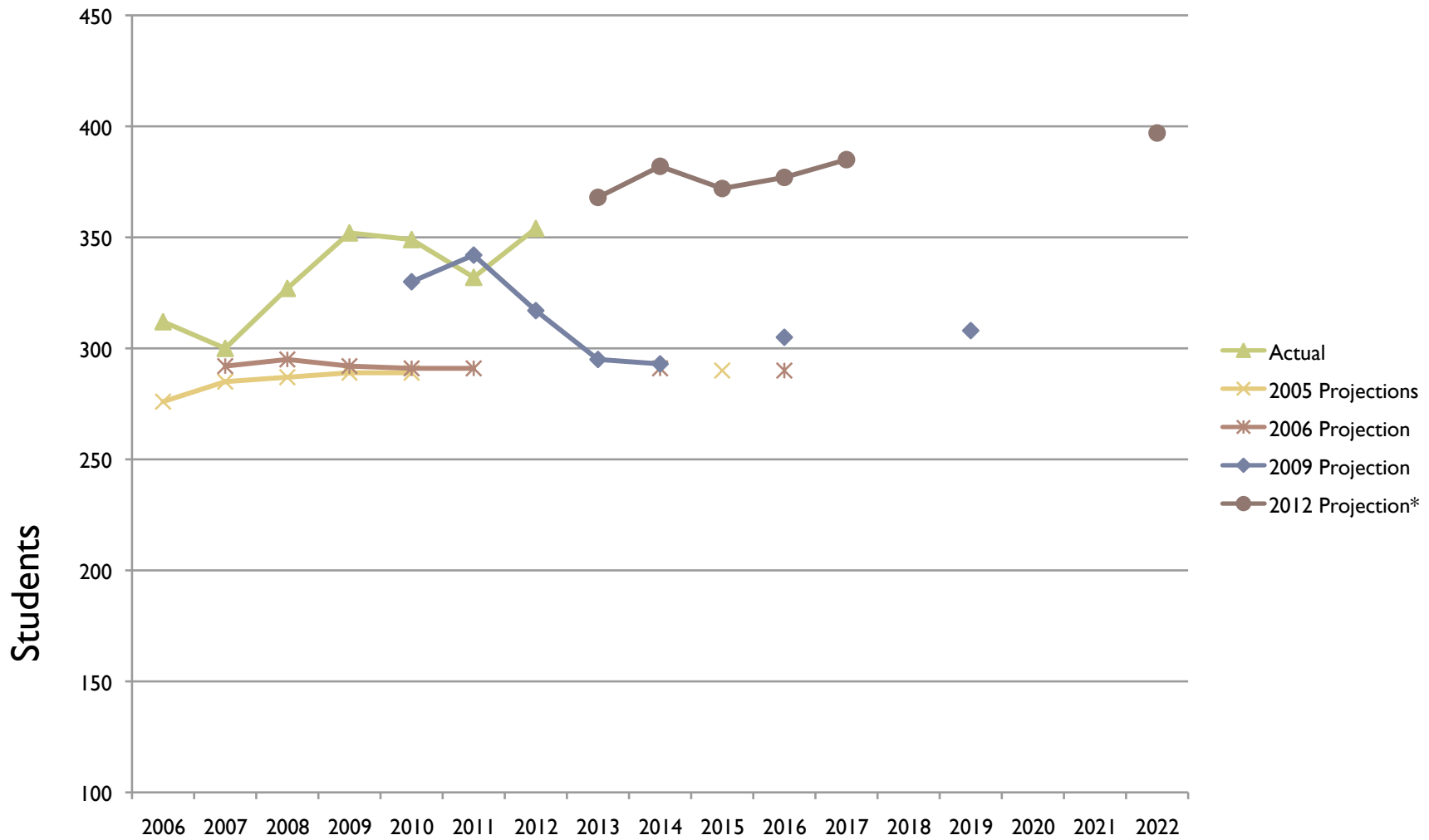
# Problems Statement

---

- ▶ MPCSD Lacks Flexibility to handle increase of student enrollment in the next 10 years
- ▶ MPCSD total enrollment range by 2017:
  - ▶ 3000- 3230 students and potentially 3350 by 2022
  - ▶ Plan for 3230 with flex to increase to 3350 students
- ▶ Transitional Kindergarten size is unknown
- ▶ TK-K: 430 students
- ▶ Grades 1<sup>st</sup> to 8<sup>th</sup> @ 350 students = 2800 students
- ▶ Grades TK – 5: 2180 students
- ▶ Grades 6 – 8: 1050 students



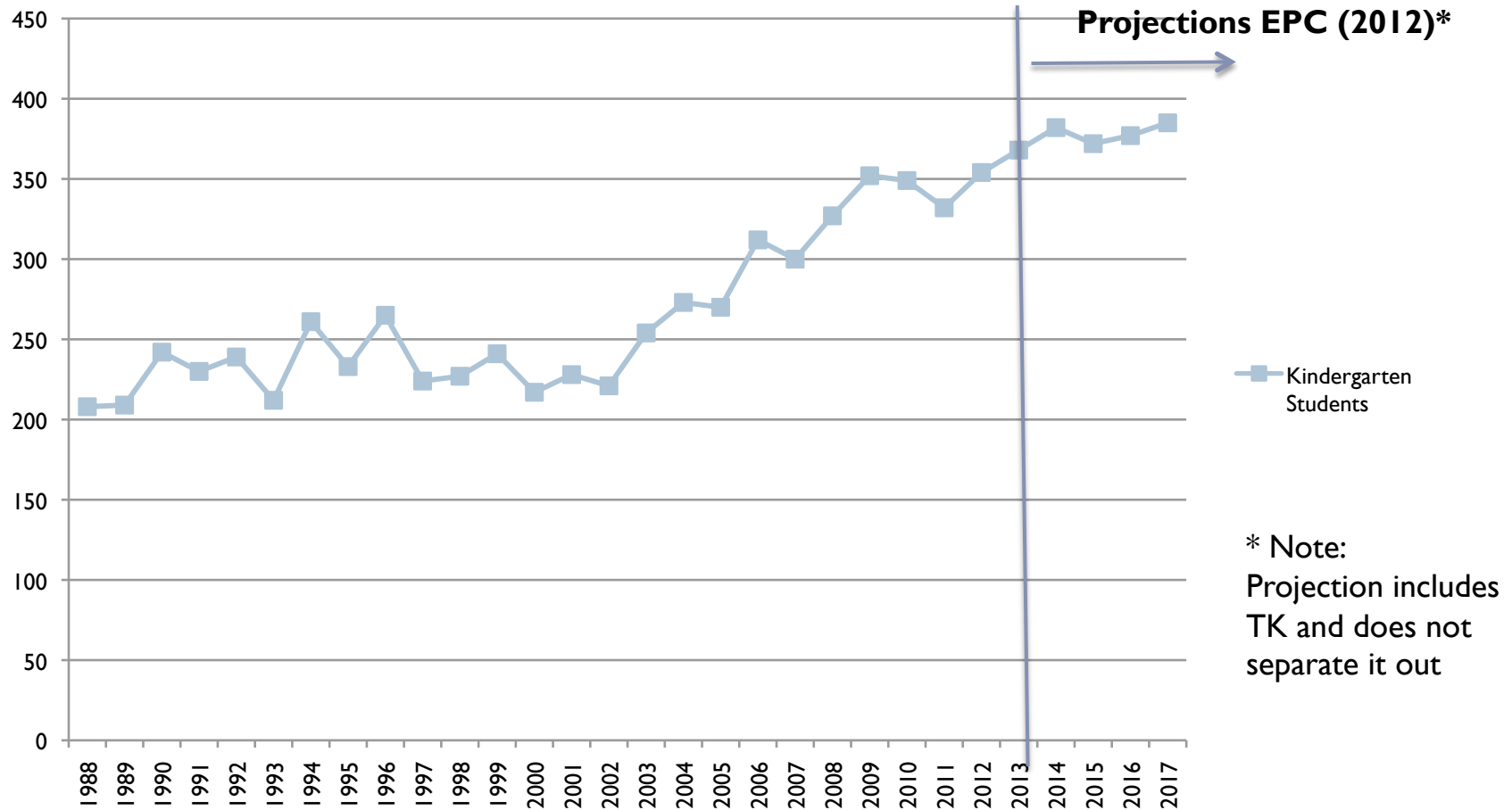
# Actual vs. Projected Kindergarten Enrollment



Source: EPC Projections 2006, 2009, and 2012. \* 2012 Projections include TK students

# Historical Enrollment Data and Growth

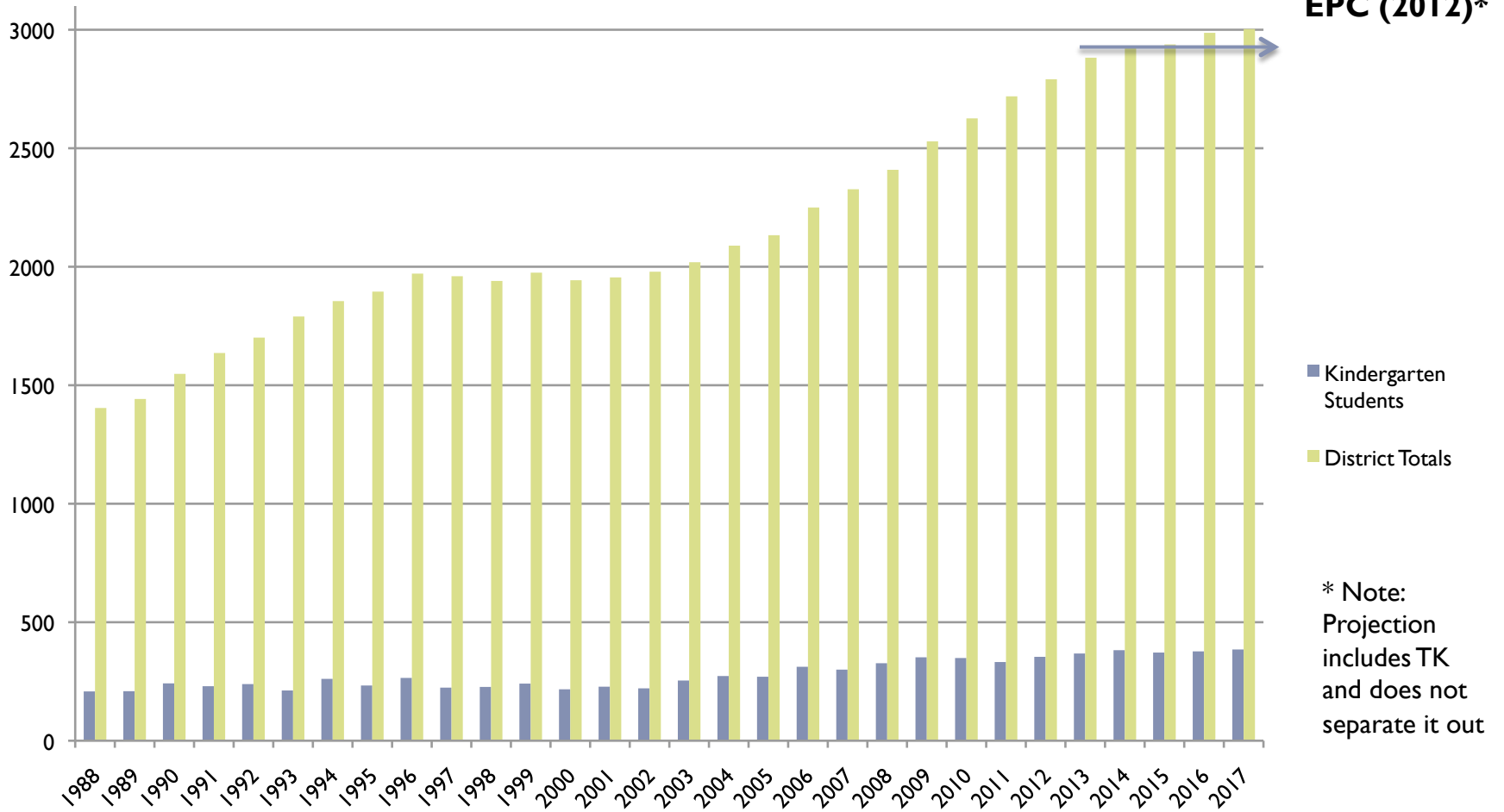
## Kindergarten Enrollment from 1988 to 2017



# Historical Enrollment Data and Growth

## MPCSD Total Enrollment from 1988 to 2017

Projections  
EPC (2012)\*



\* Note:  
Projection  
includes TK  
and does not  
separate it out



# Road Map - Process and Timeline

Meetings/Objective	Forum	Date
Leadership Team – Confirm process and timeline	Leadership Team	10:15 am, January 15.
Leadership Team	District Admin Leaders	8:00 – 10:30. January 29, 2013
Superintendent Communication	Email Supt. Newsletter	Jan 30
Outreach Meetings (Encinal, Laurel, Oak Knoll, and Hillview Schools)	Public / PTO	Laurel Feb 7 at 8:15 to 9:15 and Hillview 9:30 to 10:30; Oak Knoll Feb 13 from 8:15 to 9:30 a.m.; Encinal 8:45 am Feb 19
Outreach Meeting Socialize guiding principles and brainstorm configuration alternatives	MPAEF	9:30 – 10:30, February 12
Outreach meetings with each school’s staff and DO/TERC (Feb 4 )	Teachers and Staffs	Jan 23 at Oak Knoll; Feb 6 at Encinal; Feb 21 at Laurel; and Hillview at Jan 29.
Additional evening Outreach meeting for parents/ community	Public	February 12 at 7:00PM
Special School Board Meeting / Evaluate Options refined by ad hoc Committee	Public / Special Board Meeting	March 6, 2013 at 7PM
Board Meeting to take <i>at least</i> official action GAIS Lease before 4/10	Public / Regular Board Meeting	March 12, 2013 or Special Board Meeting



# Guiding Principles

---

▶ **Necessary Conditions**

- Ensure total District capacity will sufficiently meet projected 10 year enrollment range
- Ensure timely implementation for bringing additional capacity on-line

▶ **Guiding Principles**

**EDUCATIONAL EXPERIENCE**

- Foster effective educational environments for all District students
- Provide a comparable educational opportunity to all District students
- Promote our core values: engagement, innovation, leadership, partnership and perseverance

**SCHOOL AND DISTRICT CULTURE**

- Promote cohesive schools, neighborhoods and District community
- Foster community through school sizes and configurations

**OPERATIONS**

- Promote effective short and long-run operational and facility costs
  - Provide adequate flexibility and optimize the use of space at all grade levels
  - Promote safe routes to school and consider community traffic and neighborhood impacts
- 



# Potential Options

---

1. Accommodate increased enrollment at existing campuses by increased class sizes.
  - a) TK-3 Class Sizes of 23:1
  - b) Grade 4 – 5 Class Sizes of 26 :1
  - c) Encinal at 883, Oak Knoll at 818 and Laurel at 483.
  - d) Total TK – 5 enrollment at 2134.
2. Develop O'Connor and Laurel sites as neighborhood K-5 schools.
  - a) Oak Knoll : 700
  - b) Encinal 700
  - c) Laurel: 460
  - d) O'Conner: 320
  - e) Total Capacity: 2180
  - f) What would the new boundaries look like?

## Potential Options

---

3. Create a district-wide school of choice program at one site.

### Option A

- a) Spanish Immersion at O'Conner Site
- b) 2 Cohort Class
- c) K-5 School with 240-260 Students or K-8 with 360-380 Students
- d) Laurel K-3: 460
- e) Encinal K-5: 730
- f) Oak Knoll K-5: 730



## Potential Options

---

3. Create a district-wide school of choice program at one site.

### Option B

- a) STEM Program at Laurel K-5: 480 students
- b) O'Conner K-5 : 380 students
- c) Encinal K-5: 660
- d) Oak Knoll K-5: 660
- e) What would the boundaries look like?



---

4. Develop Laurel as a neighborhood K-5 school (of comparable enrollment to Oak Knoll and Encinal) encompassing both the O'Connor and the existing Laurel sites.

- a) Laurel K-3: 480 students
- b) O'Conner: TK, 4-5: 270
- c) Encinal TK-5: 715
- d) Oak Knoll TK-5: 715

