

Community Online Input on Structural Deficit

Summary Report to Board from
Superintendent's Advisory
Committee on Communication

November 9, 2016

Superintendent Advisory Committee

Members

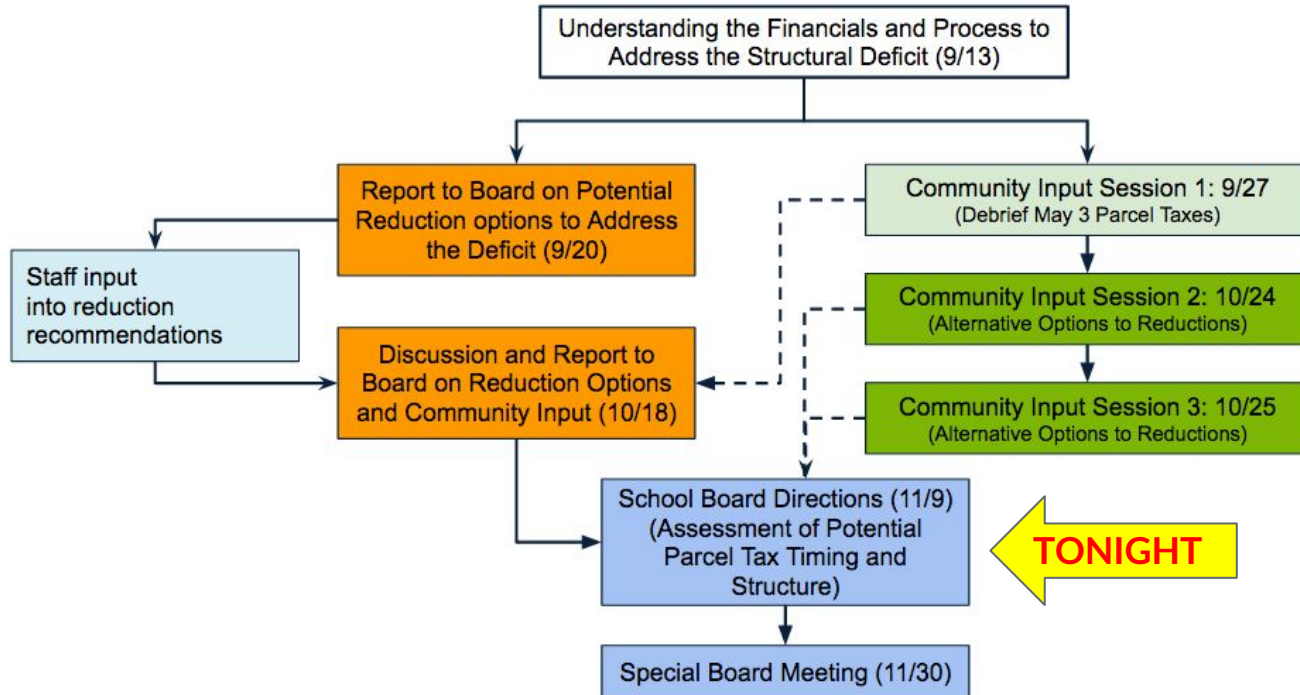
- Board: *Stacey Jones & Terry Thygesen*
- Parents: *Jill Kispert, Stacey Wueste, Kate Kennedy*
- Staff: *Lanita Villasenor, Erik Burmeister, Al Hart*

- Community: *Parke Treadway*

Team's Purpose: To advise Superintendent on issues related to communication and to lead efforts to improve communication within and without the organization.

Email address: commadvisoryteam@mpcsd.org

The Process



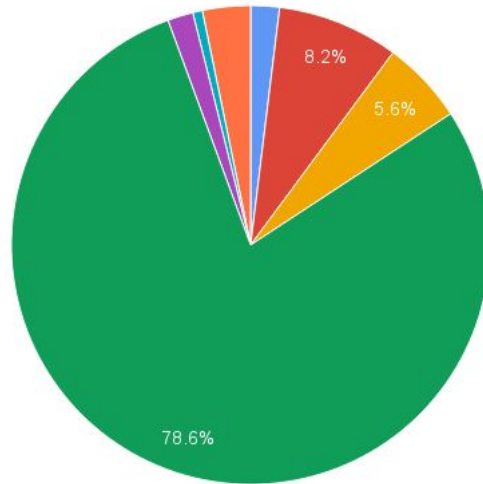
Our Team's Commitment to you...

- To record your input objectively, without bias, and present your input to the Board in an organized and thoughtful manner for their consideration.
- To seek, record, and objectively report input as it is provided to us via email, our online input form, or orally at any meetings regarding financial planning.
- Role Tonight: To present a summary of the findings and submit written transcripts to the Board of all input received in the community input process including the online input form and emails.

Summary of Findings

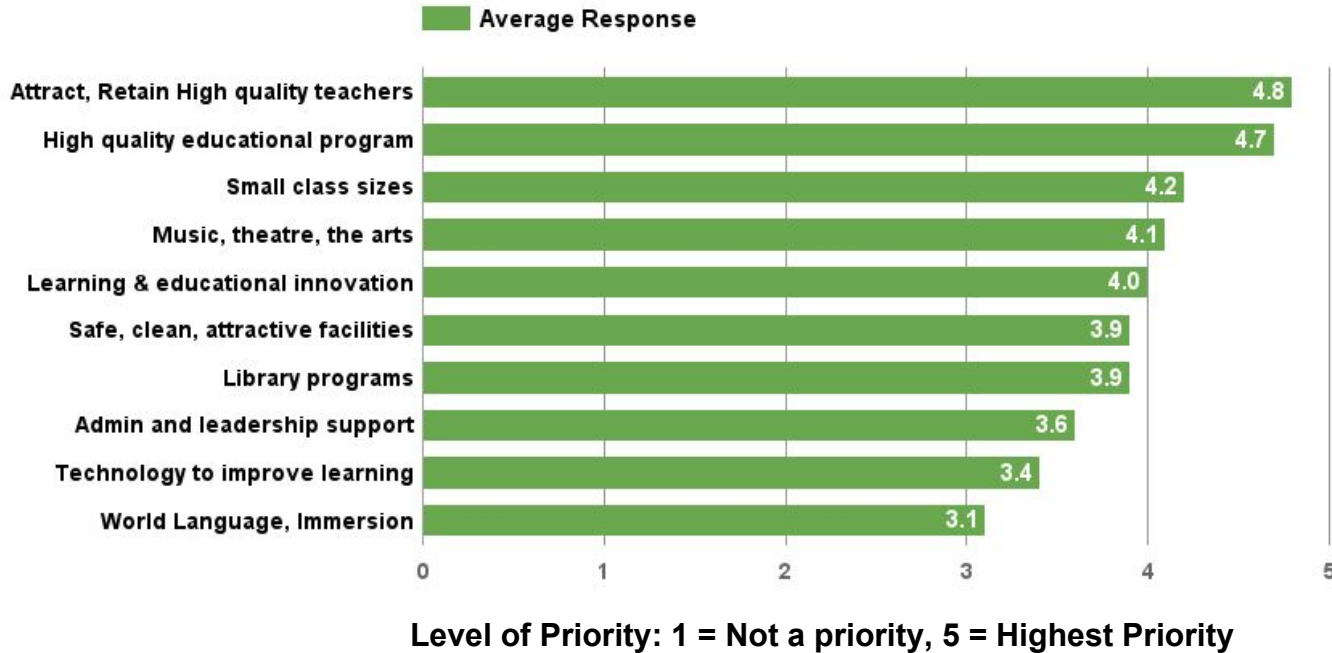
Who Responded

- 469 responses to online form (463 identified relationship to MPCSD)

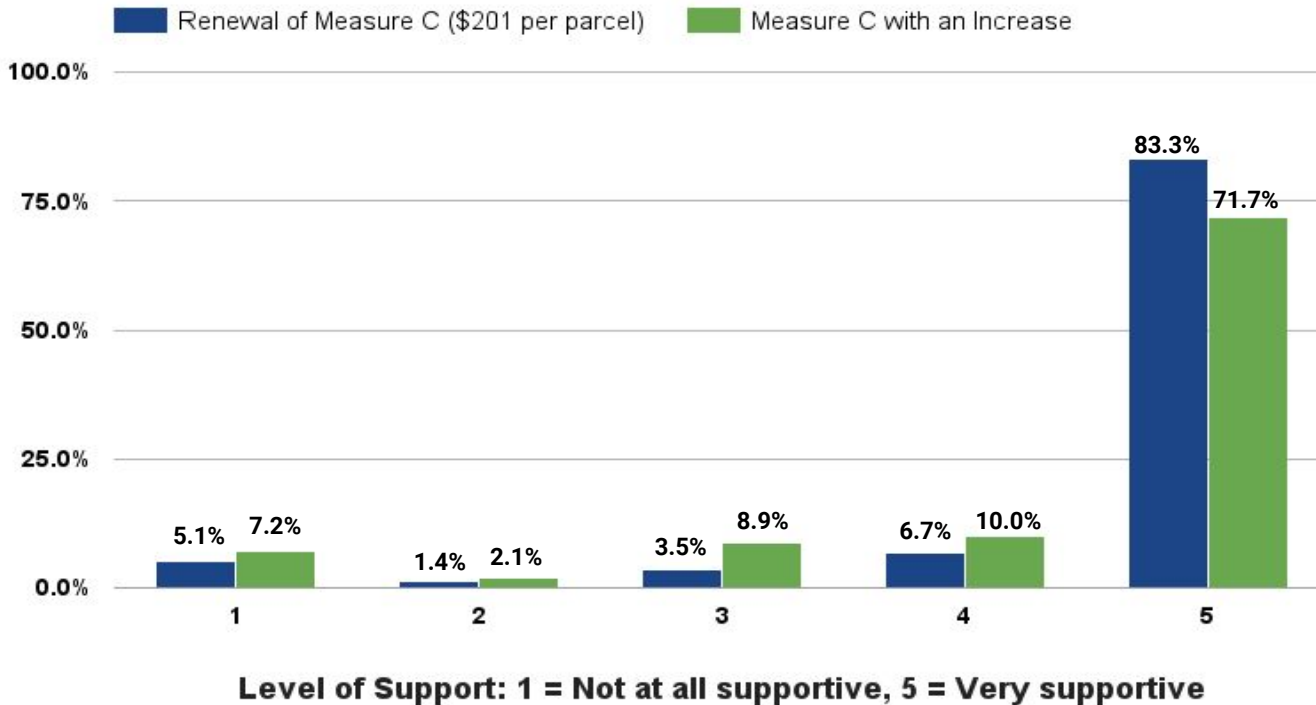


- Resident with no (and not likely to have) children in MPCSD schools (1.9%)
- Resident with children who attended MPCSD schools in past (8.2%)
- Resident with children who will eventually attend MPCSD school (5.6%)
- Resident with children currently attending MPCSD schools (78.6%)
- Resident with children who attend private schools (1.7%)
- Not a resident of MPCSD (0.6%)
- Staff Member of MPCSD (3.2%)

Input on Priorities

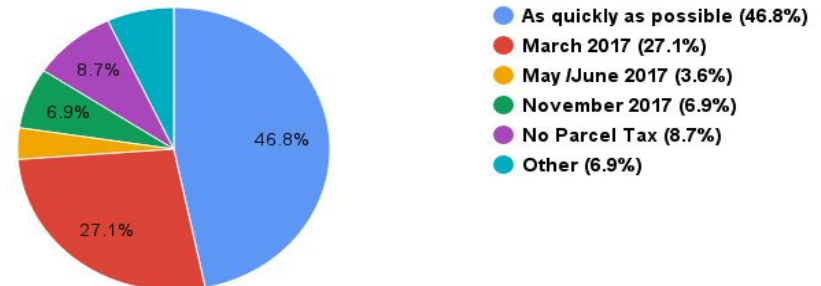
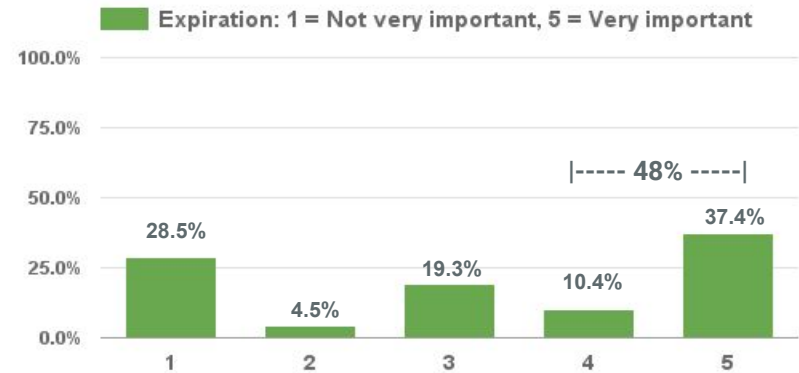


Input on Support of Potential Parcel Tax



Input on Structure for Potential Parcel Tax

- Nearly half of the responses selected that an expiration date is important.
- 74% of responses support a ballot timing of March or “as quickly as possible.”



Other Considerations

- Written commentary shows clear support but also reveals concerns with the:
 - Level of administrative spending
 - Perceived lack of transparency regarding district finances
 - Lack of participation from residents without children in district schools
 - Desire for clearer and more accessible communication from the district
- Announce FAQ?
- Erik - panorama update?

The Process

